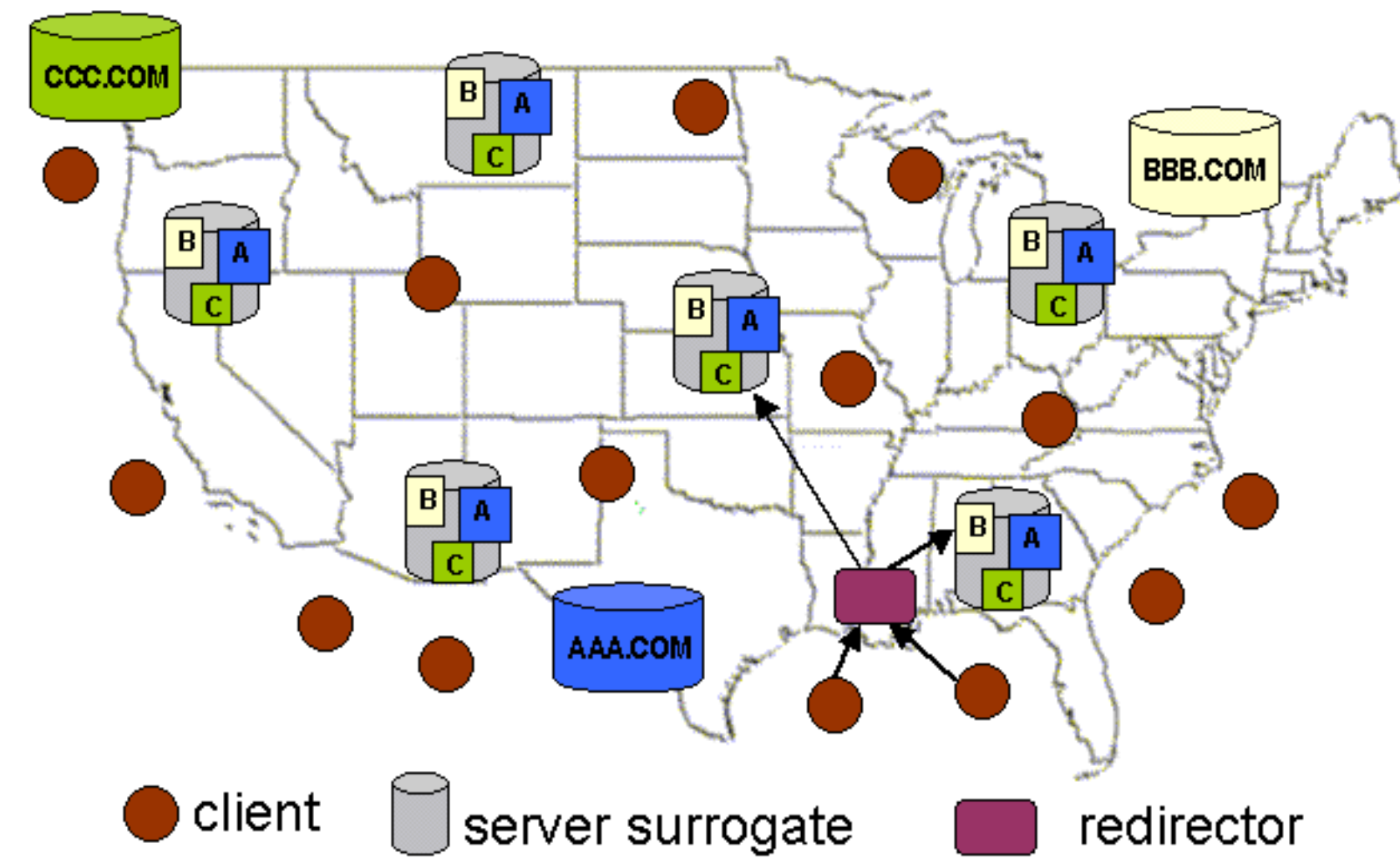


The CoDeeN Content Distribution Network

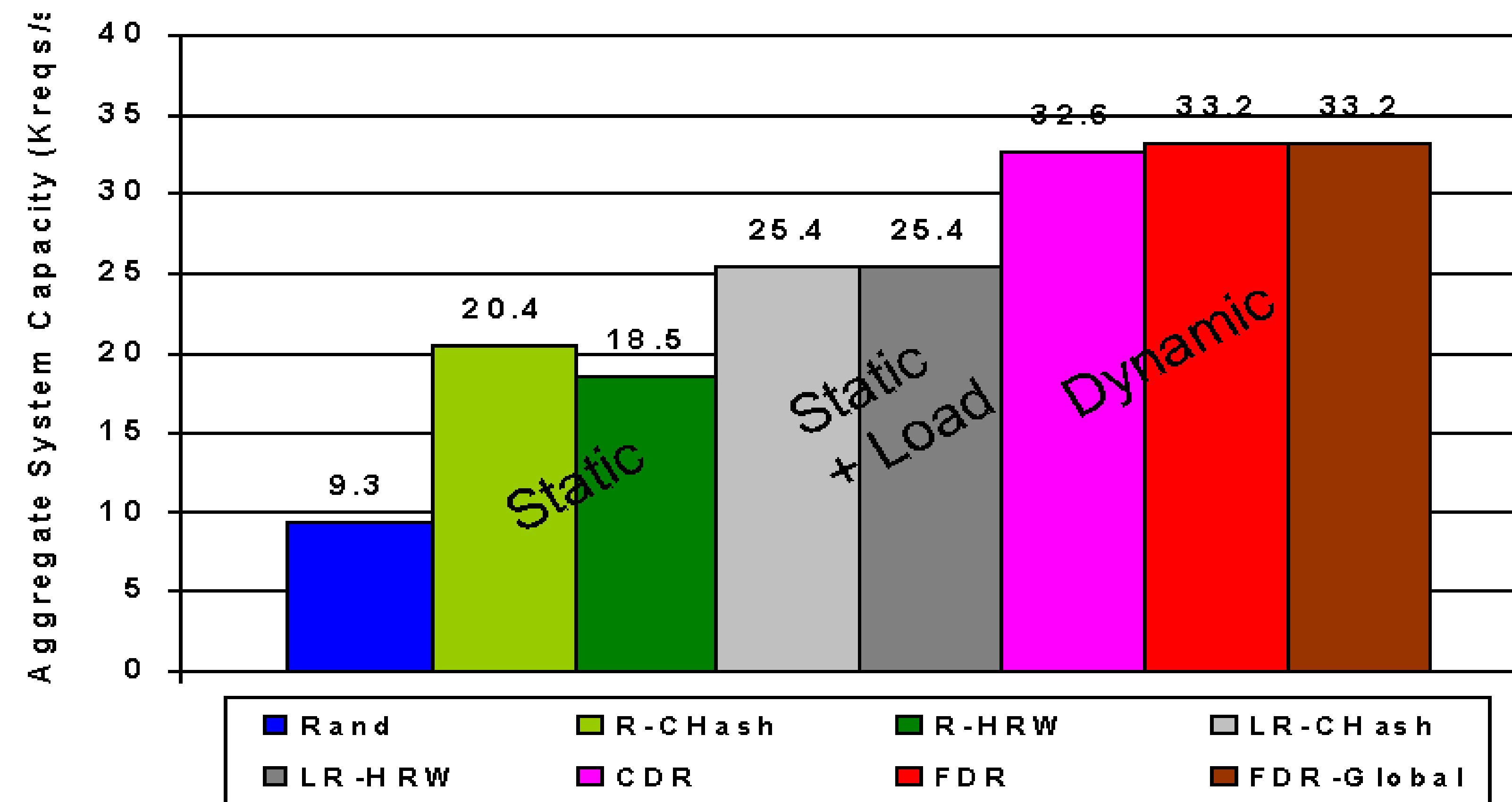
Limin Wang
 Vivek S. Pai
 Larry Peterson

 Princeton University

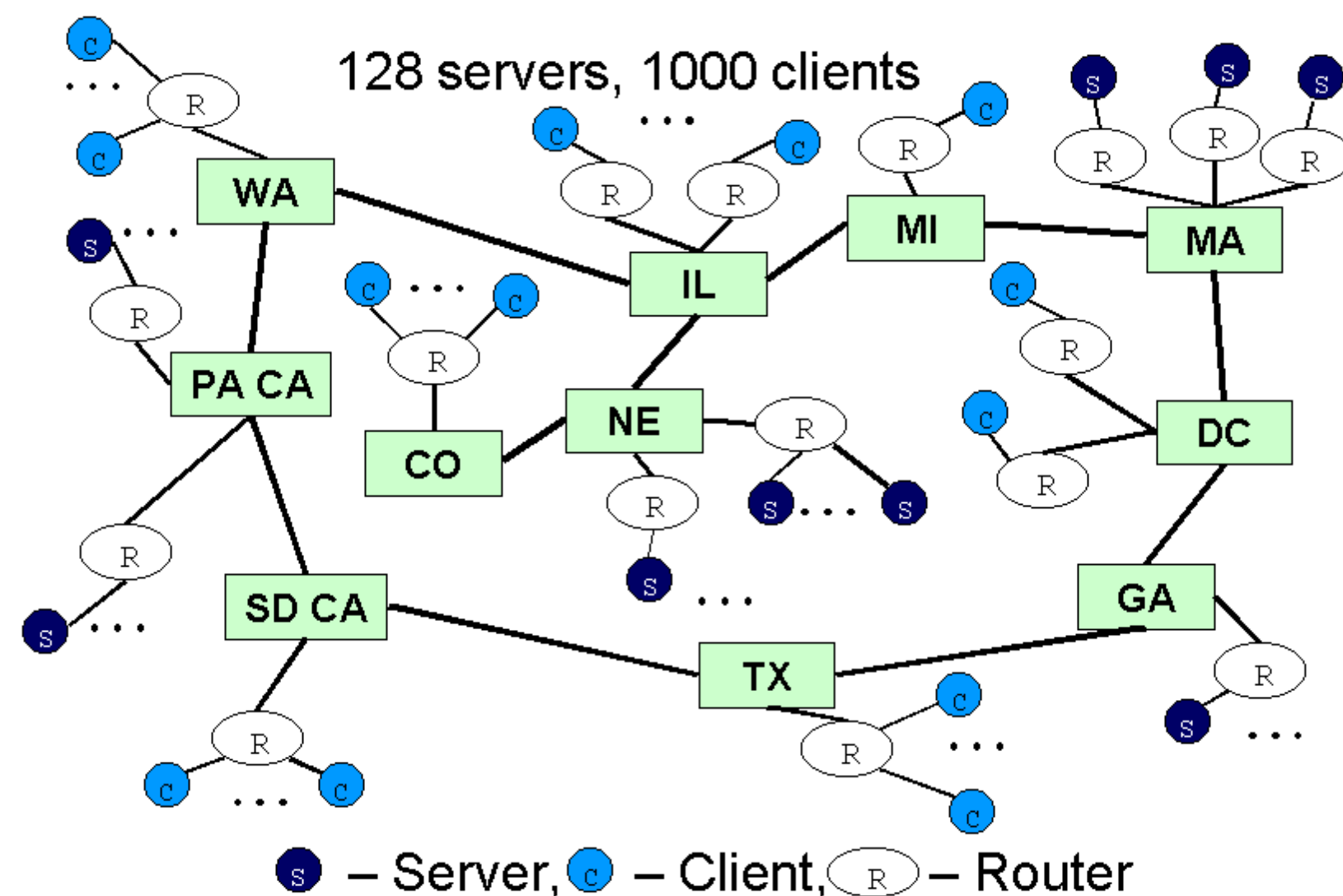
Concept



Simulated Throughput



Sim Topology



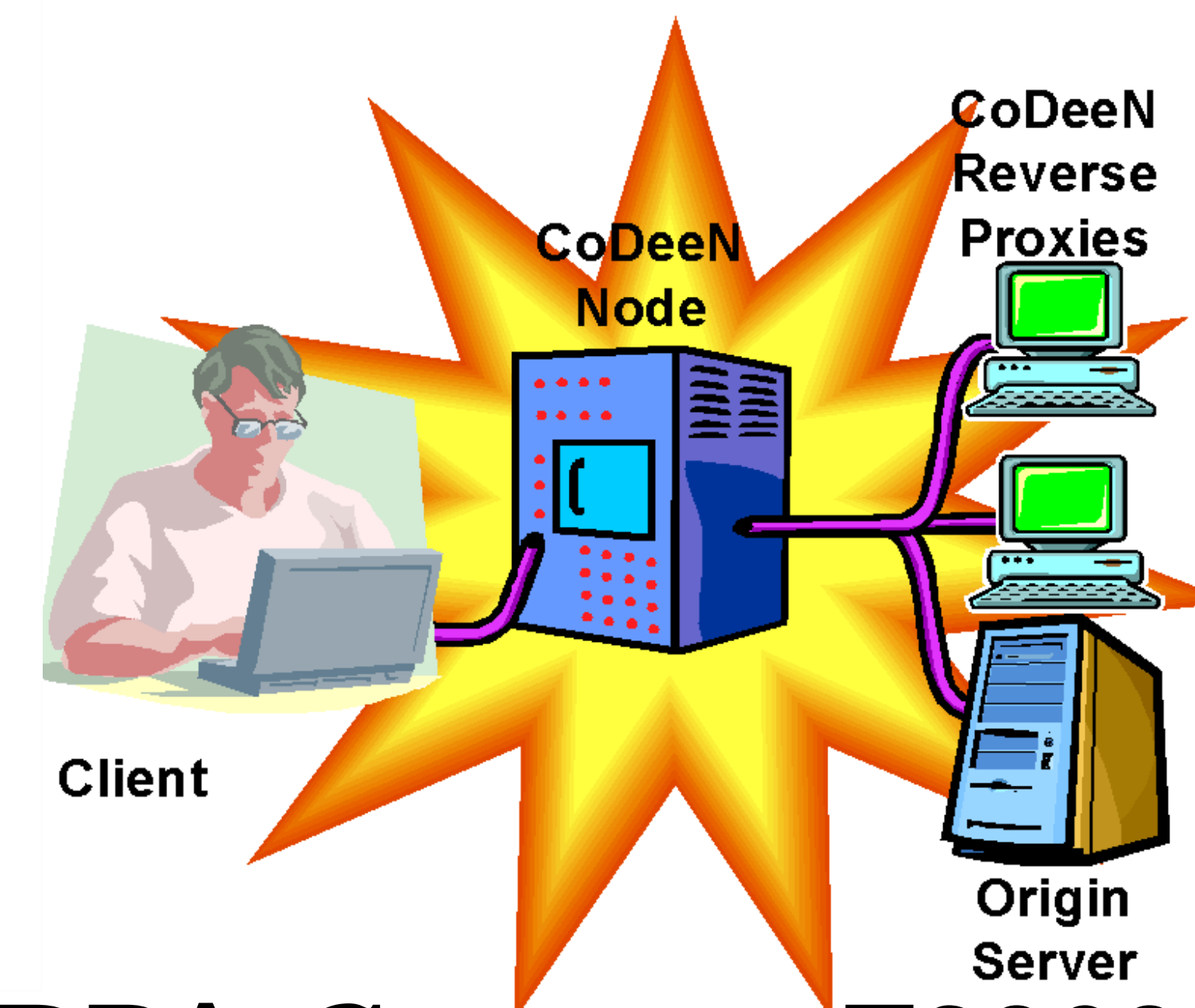
Strategies

Category	Strategy	Hashing Scheme		Dynamic Server set?	Load aware?
		CHash	HRW		
Random	Random				
Static	R-CHash	✓			
	R-HRW		✓		
Static +Load	LR-CHash	✓			✓
	LR-HRW		✓		✓
Dynamic	CDR		✓	✓	✓
	FDR		✓	✓	✓
Network Proximity	NPR-CHash	✓			✓
	NPLR-CHash	✓			✓
	NP-FDR		✓	✓	✓

Bottleneck Analysis

Utilization Scheme	Max Thpt (Kreq/s)	DISK(%)		CPU(%)	
		Mean	Stddev	Mean	Stddev
Random	9.3	100.0	0.00	21.03	1.36
R-CHash	20.4	99.15	3.89	57.88	18.36
R-HRW	18.5	99.74	1.26	47.88	15.33
LR-CHash	25.4	97.83	12.51	59.48	18.85
LR-HRW	25.4	99.00	5.94	58.43	16.56
CDR	32.6	36.10	25.18	90.07	11.78
FDR	33.2	33.96	20.38	93.86	7.58
FDR-Global	33.2	17.60	15.43	91.93	11.81

CoDeeN Node Architecture



Timeline

December 2002
 Presentation at OSDI'02 --
 "The Effectiveness of Request Redirection on CDN Robustness"

January 2003
 CoDeeN prototype developed
 12 nodes operational
 40 nodes planned

February 2003
 Monitoring interface
 Public announcement

Donors/Partners



CoDeeN stems from DARPA Contract F30602-00-2-0561, "Building Secure and Reliable Networks Through Robust Resource Scheduling"